

COMUNE DI COLBORDOLO

PROVINCIA DI PESARO - URBINO

PIANO PARTICOLAREGGIATO CENTRO STORICO DEL CAPOLUOGO

TAV. **SF 6**

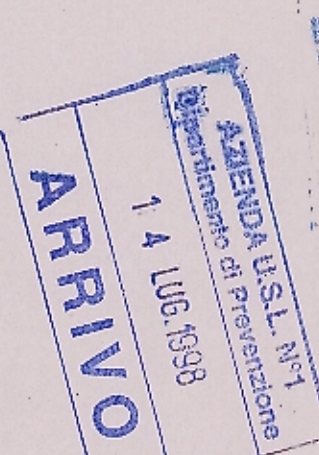
SCALA 1:500

DATI NUMERICI ED URBANISTICI

DATA: E. LUG. 1998

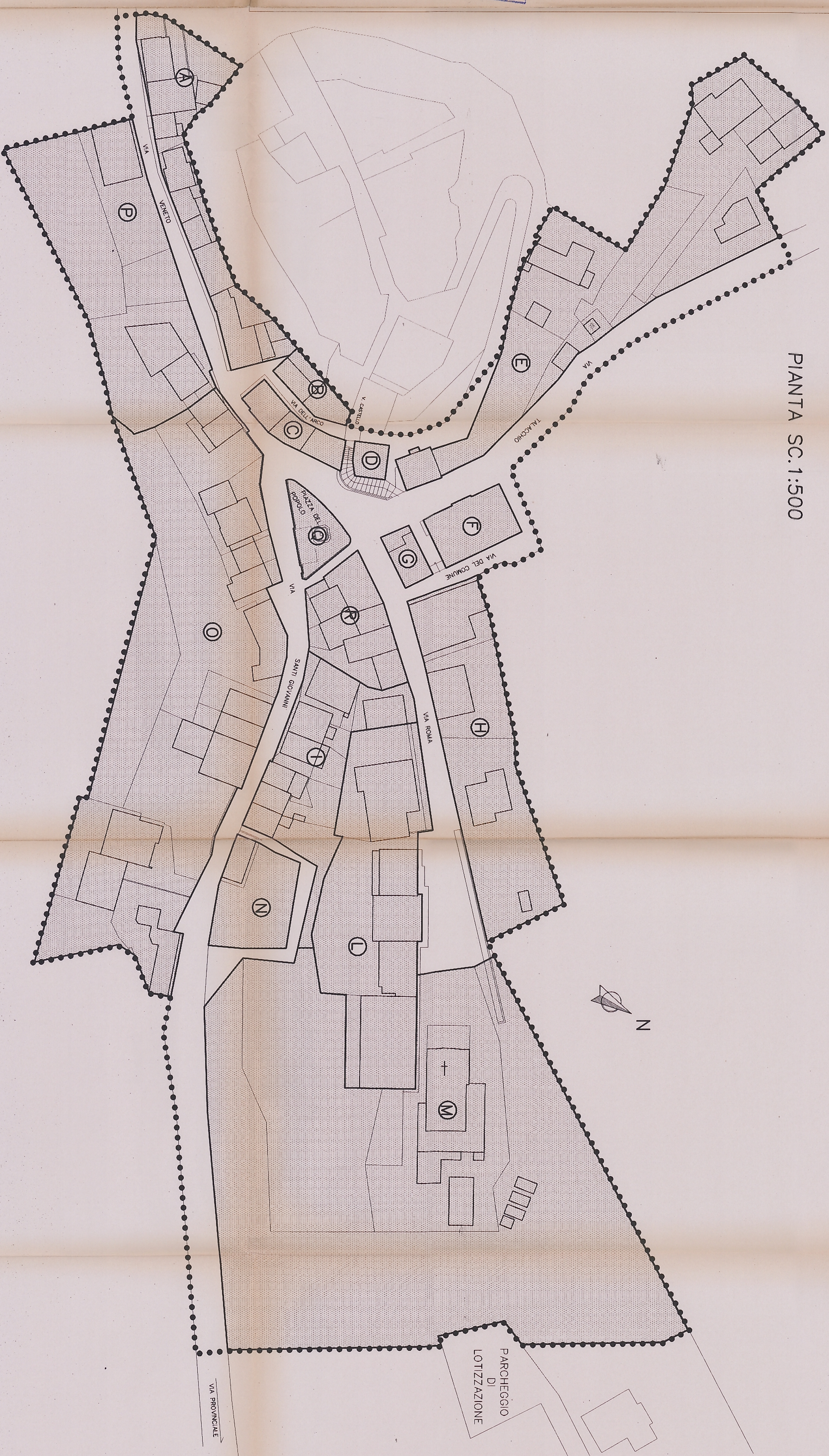
PROGETTISTA:

Dott. Arch. GIORGIO CAMBONI

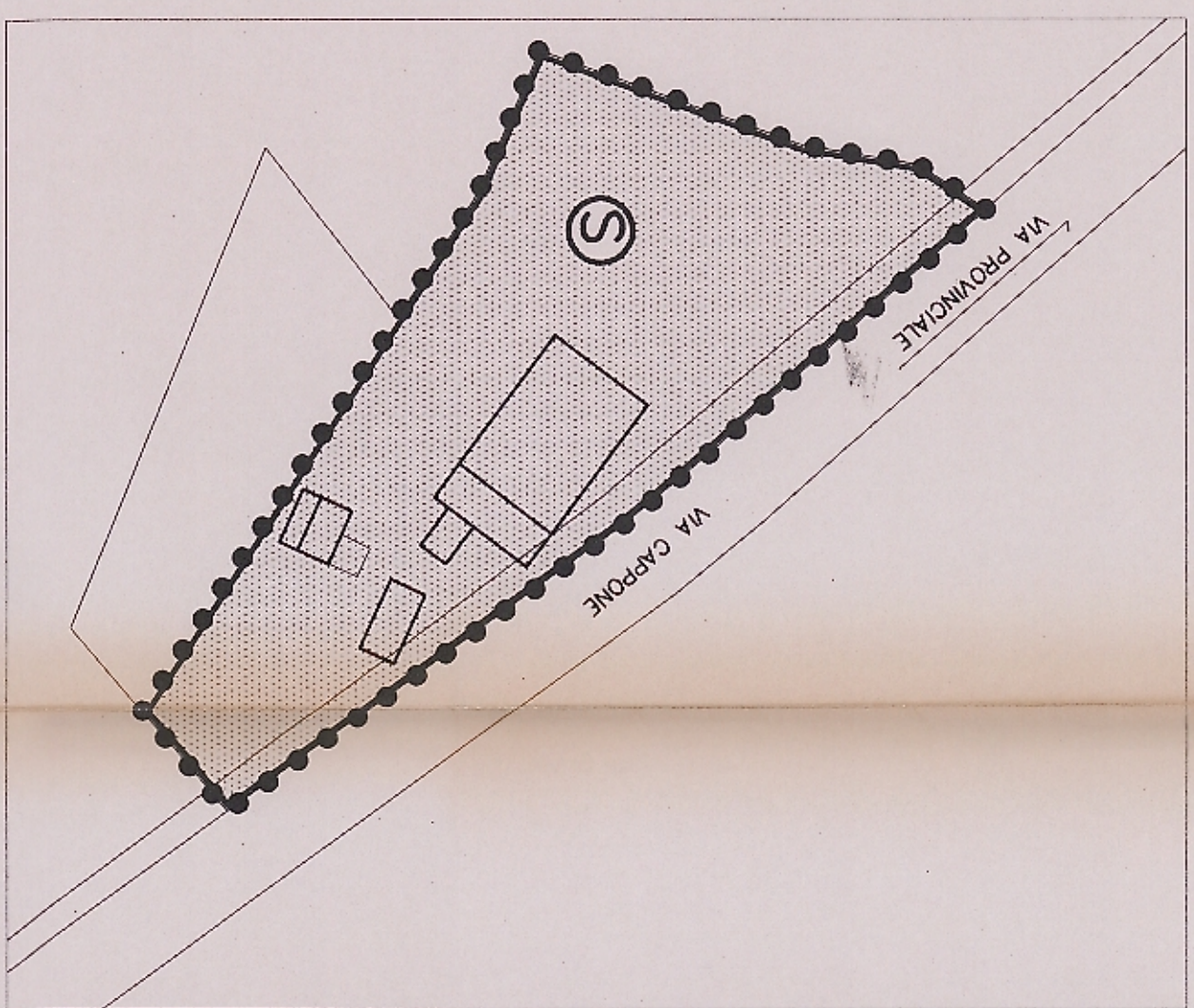


CAMBONI
 Arch. GIORGIO CAMBONI
 Arch. LUCIO CAMBONI
 Arch. MARZIA CAMBONI
 Arch. ALBERTO IACCARINO
CAMBONI ARCHITESTUDIO
ARCHITETTI ASSOCIATI
 61100 PESARO Via Nornelli, 72 sc. C int. 110
 Telefono: 0721/403553 - Fax: 0721/22269

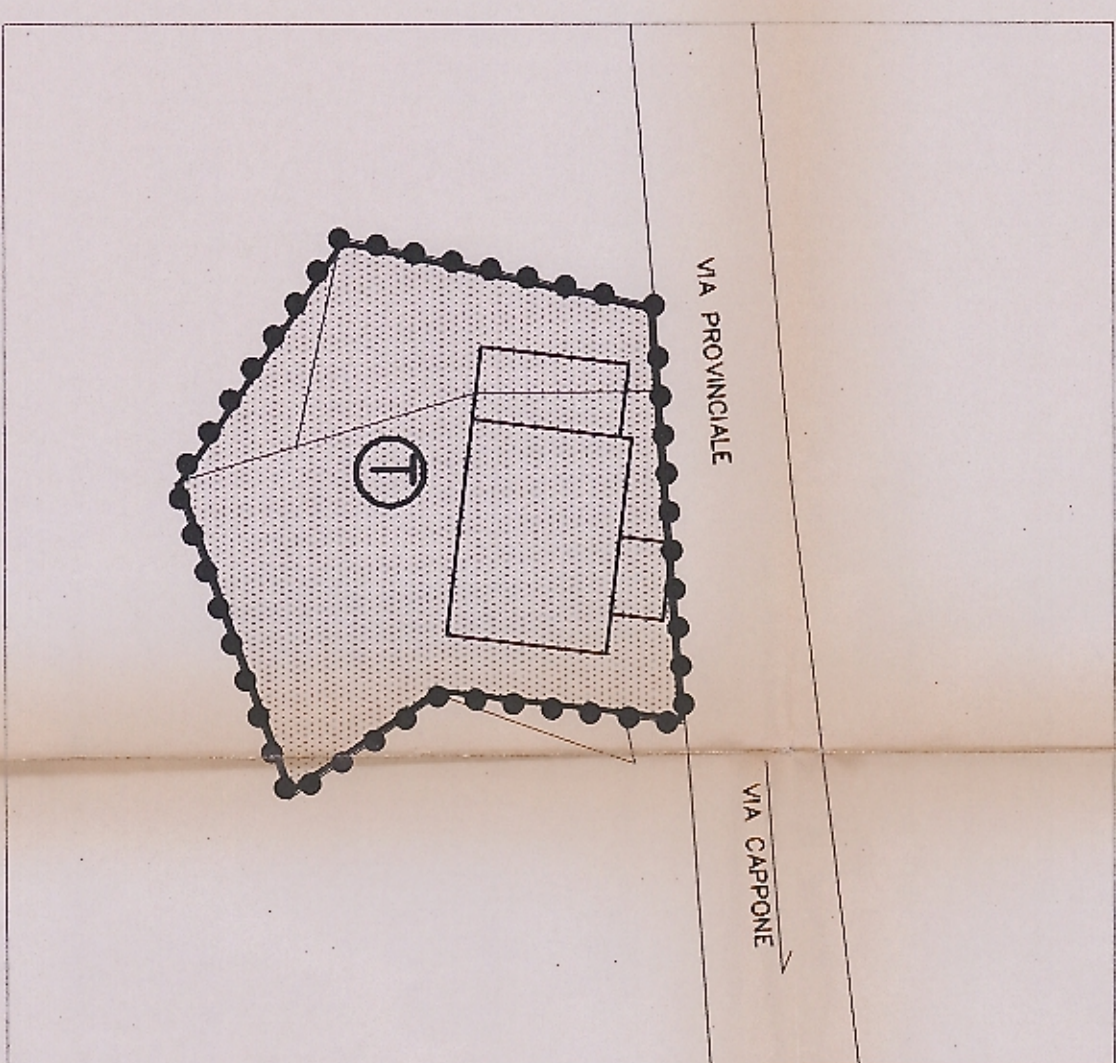
PIANTA SC.1:500



PARTICOLARE A



PARTICOLARE B



DATI NUMERICI PER AMBITO

STATO ATTUALE

AMBITO	VOLUME	SUP. COPERTA	SUP. FONDARIA
A	mc 3451	mq 589	mq 1071
B	mc 1245	mq 157	mq 169
C	mc 1300	mq 219	mq 219
D	mc 4361	mq 75	mq 75
E	mc 2720	mq 412	mq 2914
F	mc 2918	mq 290	mq 290
G	mc 585	mq 109	mq 109
H	mc 2785	mq 1427	mq 1661
I	mc 4185	mq 492	mq 1097
L	mc 7608	mq 971	mq 1996
M	mc 3098	mq 575	mq 8720
N	mc 691	mq 61	mq 492
O	mc 6760	mq 1015	mq 5022
P	mc 1818	mq 78	mq 2132
Q	mc 153	mq 51	mq 216
R	mc 2550	mq 425	mq 559
S	mc 705	mq 147	mq 1183
T	mc 1245	mq 216	mq 860
T	mc 48178	mq 7299	mq 28785

mq 48178 mq 7299 mq 28785